

**MINISTERIO DE OBRAS PUBLICAS Y URBANISMO**

**Dirección General de Obras Hidráulicas**

**CONFEDERACION HIDROGRAFICA DEL SEGURA**



**DOWNSTREAM TRANSFER STRUCTURES**

**TAJO-SEGURA**





OJÓS DIVERSION DAM



CHICHARRA AND YESOS AQUEDUCTS



# TAJO-SEGURA

## MAIN REGULATION STRUCTURES

	Storage 10 <sup>6</sup> × m <sup>3</sup> (acre-feet)	Dam Height m. (feet)	Crest Length m. (feet)
Ojós diversion dam	1.6 (1,297)	16 (53)	52 (170)
El Mayés regulating reservoir	1.4 (1,135)	32 (105)	300 (984)
Crevillente regulating reservoir	13.5 (10,944)	55 (180)	360 (1,181)
La Pedrera reservoir	250 (202,677)	65 (213)	700 (2,296)

## MAIN LINE STRUCTURES

Total length of channels	315 km.	(196 miles)
Maximum flow	30 m <sup>3</sup> /s.	(2,100 acre-feet/day)
Minimum flow	7 m <sup>3</sup> /s.	(490 acre-feet/day)
Total length of tunnels	25 km.	(15.5 miles)
Length of the longest tunnel	4 km.	(2.5 miles)
Total length of siphons	24 km.	(14.9 miles)
Length of the longest siphon	5 km.	(3.1 miles)
Maximum pressure head	90 m.	(295 feet)
Total length of aqueducts	7 km.	(4.35 miles)
Length of the longest aqueduct	1,800 m.	(1.12 miles)
Maximum aqueduct height	46 m.	(151 feet)

Ojós Pumping Station:

Total power	40,000 kW.
Number of groups	4
Pumping head	150 m. (492 feet)
Maximum flow	23 m <sup>3</sup> /s. (1,611 acre-feet/day)

Alhama Pumping Station:

Total power	11,750 kW.
Number of groups	5
Pumping head	116 m. (380 feet)
Maximum flow	10 m <sup>3</sup> /s. (700 acre-feet/day)

Blanca Pumping Station:

Total power	9,000 kW.
Number of groups	5
Pumping head	171 m. (561 feet)
Maximum flow	3 m <sup>3</sup> /s. (210 acre-feet/day)




Fuente Alamo Pumping Station:

Total power	7,500 kW.
Number of groups	4
Pumping head	92.87 m. (305 feet)
Maximum flow	4.64 m <sup>3</sup> /s. (325 acre-feet/day)

## APPLICATION OF THE TRANSFERRED VOLUME OF WATER

FOR IRRIGATIONS:	Resources, Hm <sup>3</sup> (acre-feet)		Irrigation Surface, Ha (sq. mile)	
	Transfer	Own	New	Improved
Upper and medium plains of the Segura	65 (52,696)	50 (40,535)	9,451 (36)	8,927 (34)
Irrigated lands of Mula and its area	8 (6,485)	9 (7,296)	1,500 (6)	1,050 (4)
Lorca and Guadalentín Valley	65 (52,696)	80 (64,856)	6,731 (26)	19,214 (74)
Irrigations of Levante, Lowlands and Marsh salts of Alicante	125 (101,338)	80 (64,856)	27,390 (106)	23,923 (90)
Cartagena fields	122 (98,906)	31 (25,132)	23,000 (89)	9,800 (38)
Almanzora valley (Almería)	15 (12,160)	-	3,000 (11)	-
Total irrigations	400 (324,283)	250 (202,276)	71,072 (274)	62,284 (240)
FOR WATER SUPPLY	110 (89,177)	-	-	-
Losses	90 (72,063)	-	-	-
Total diverted from the Tagus	600 (486,424)	-	-	-

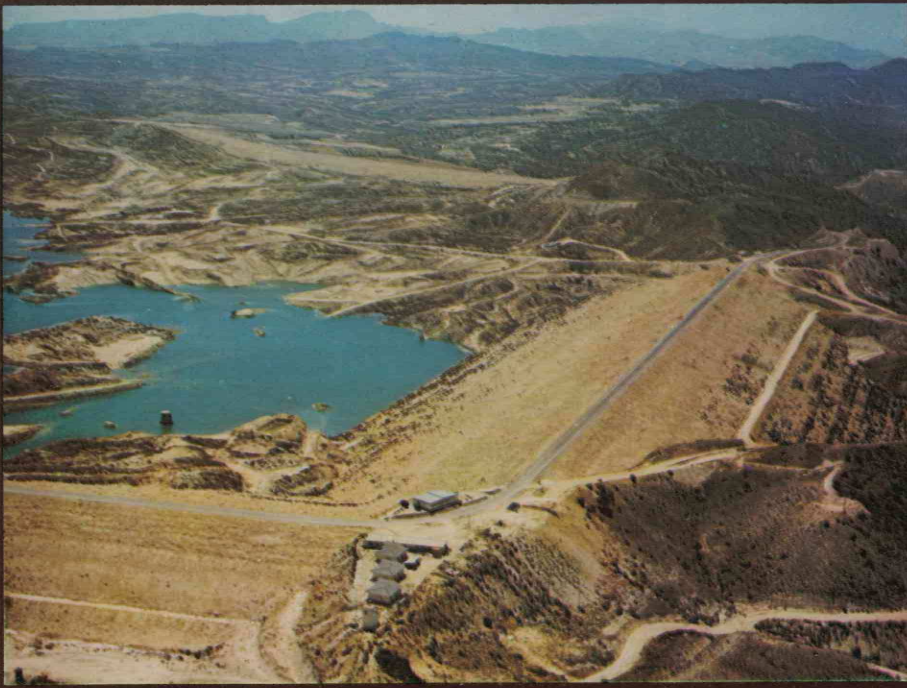
# ACUEDUCTO TAJO-SEGURA : POSTRASVASE

-  REGADÍOS CON RECURSOS DE LA CUENCA DEL SEGURA .
-  REGADÍOS CON RECURSOS DEL ACUEDUCTO TAJO-SEGURA
-  REGADÍOS REDOTADOS



ESCALA = 1/500,000  
0 5 10 15 20 km.





LA PEDRERA RESERVOIR

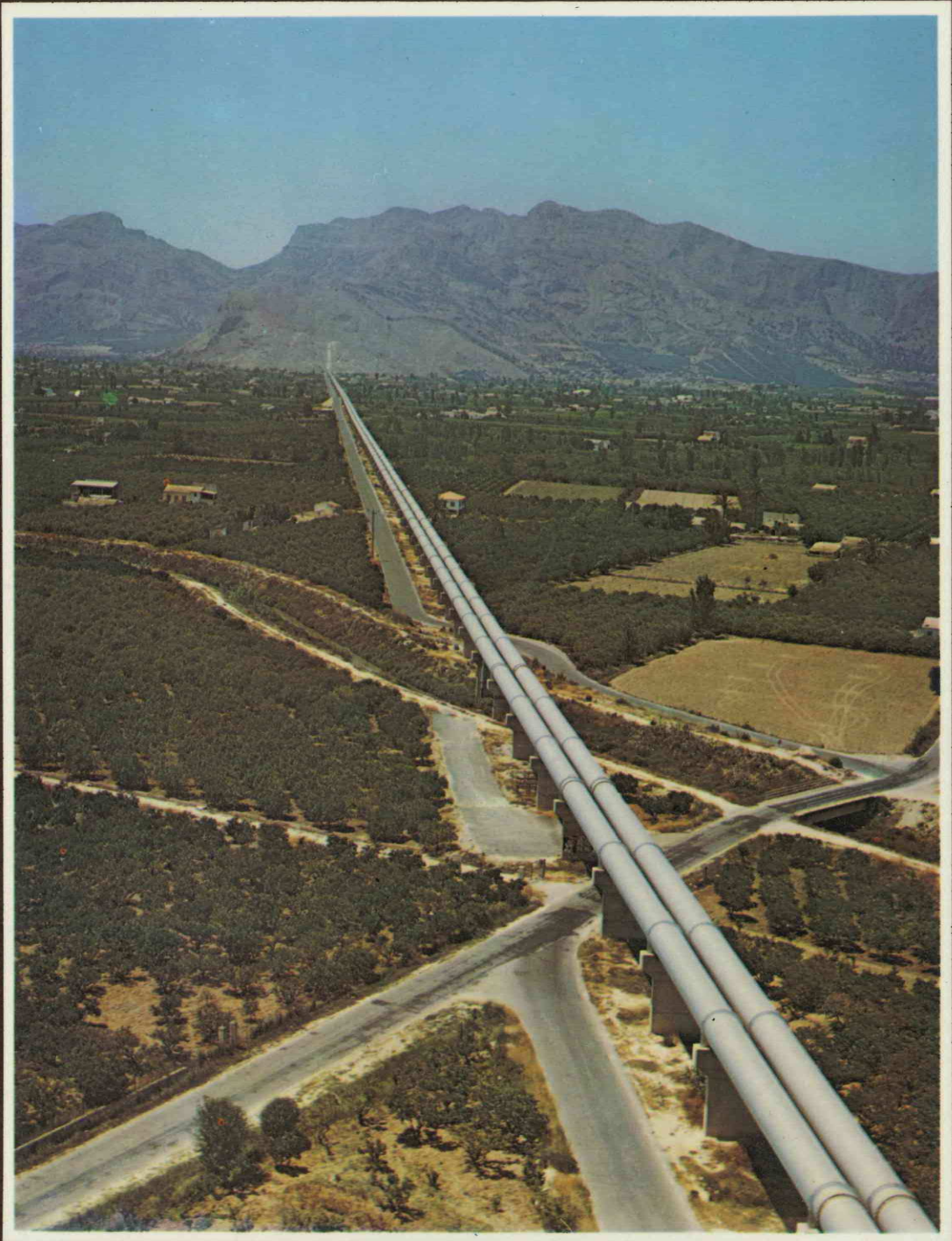


OJÓS PUMPING STATION



MAYÉS RESERVOIR





ORIHUELA SIPHON

